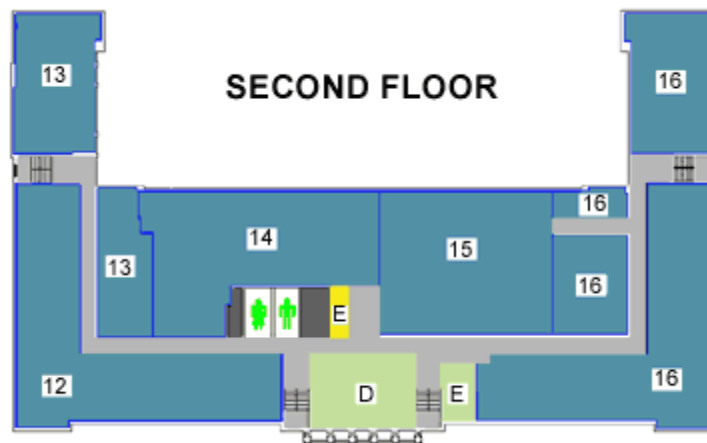


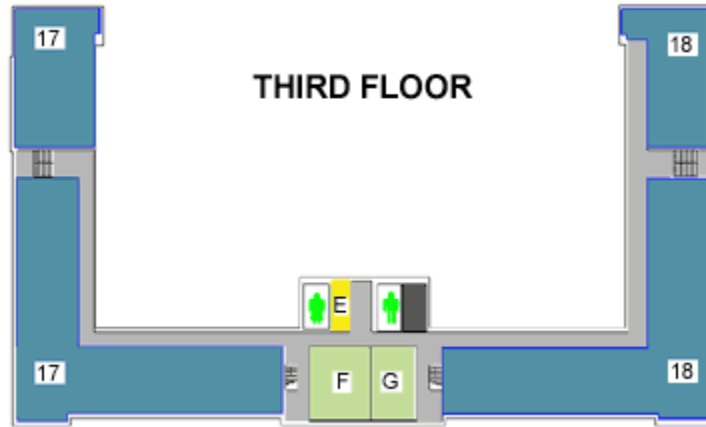
**TOWN HALL FLOOR PLAN**



- |                           |                                  |
|---------------------------|----------------------------------|
| 1. Park/Beach Pass Office | 7. Probate Court                 |
| 2. Town Clerk             | 8. Tax Assessor                  |
| 3. Tax Collector          | 9. Human Resources               |
| 4. Retirement             | 10. Community Development        |
| 5. Registrar of Voters    | 11. Selectmen's Office           |
| 6. Purchasing             | <i>A. Town Hall Meeting Room</i> |
| <b>E = Elevator</b>       | <i>B. Mazza Conf. Room</i>       |
| <b>i = Information</b>    | <i>C. Gisborne Conf. Room</i>    |



- |                         |                                |
|-------------------------|--------------------------------|
| 12. Land Use Department | 14. Parks & Recreation         |
| * Conservation          | 15. Building Inspection        |
| * Inland Wetlands       | * P&Z Board of Appeals         |
| * Planning & Zoning     | 16. Dept. of Public Works      |
| 13. Finance             | * Engineering                  |
| * Alarms                | * Highway                      |
| * Retirement            | * Sewer                        |
| * Budgeting             | * Traffic Engineering          |
| * Annual Report         | <i>D. Cone Meeting Room</i>    |
|                         | <i>E. Chimblo Meeting Room</i> |



- |                       |                                 |
|-----------------------|---------------------------------|
| 17. Social Services   | <i>F. Hayton Meeting Room</i>   |
| 18. Health Department | <i>G. Evaristo Meeting Room</i> |



- |                                     |                       |
|-------------------------------------|-----------------------|
| 19. GIS Map Requests (pdf)          | 22. Lounge            |
| 20. Land Records & Vital Statistics | 23. Health Laboratory |
| 21. Training Room                   | 24. Parking Services  |